

2014 State Fair Photography Judging

Class 1 Architecture



1



2



3



4

Select class

Class 1 – Architecture

Class 2 – Winter Wonderland

Class 3 – Iron Works

Class 4 – Farm Animals

Class 5 – Sunsets

Class 6 – Black & White

Intermediate Problem

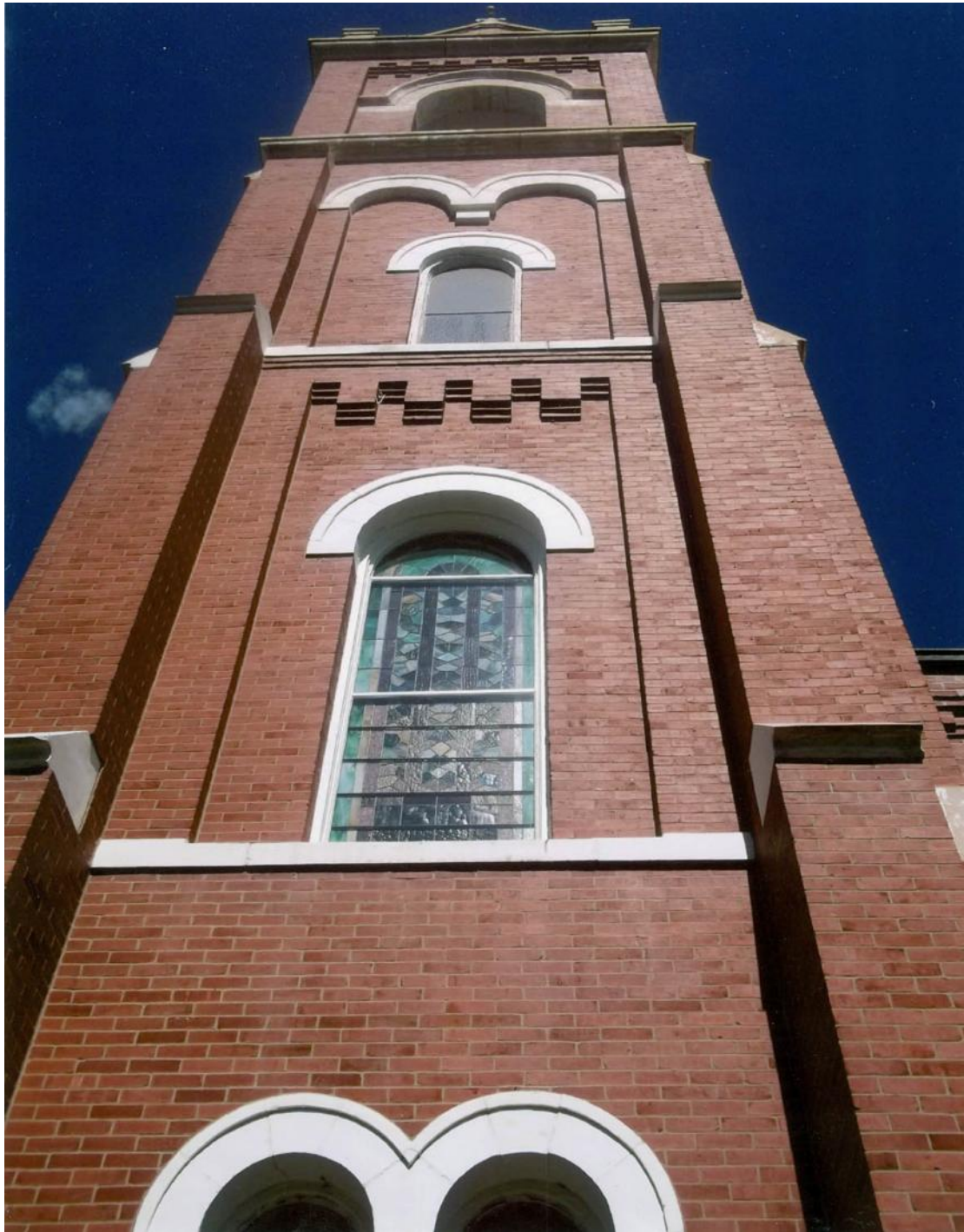
Senior Problem

Place this class of four photos in order of best to worst. Click on a photo for a full screen view, click on the large image to return to this page. Write your placing down on paper then **click the button to see official placing and reasons**









Class 1 - Architecture

Placing 1 – 2 – 3 – 4 .

v v v

Cuts 2 3 5 .



#1

Good exposure
Strong lines
Strong Subject
Shows texture
Angle shows depth
Minor edge merger

#2

Strong subject, Plain background, Nice contrast between subject/background, Good color, Angle shows depth
Hot spot on right edge
Too much negative space

#3

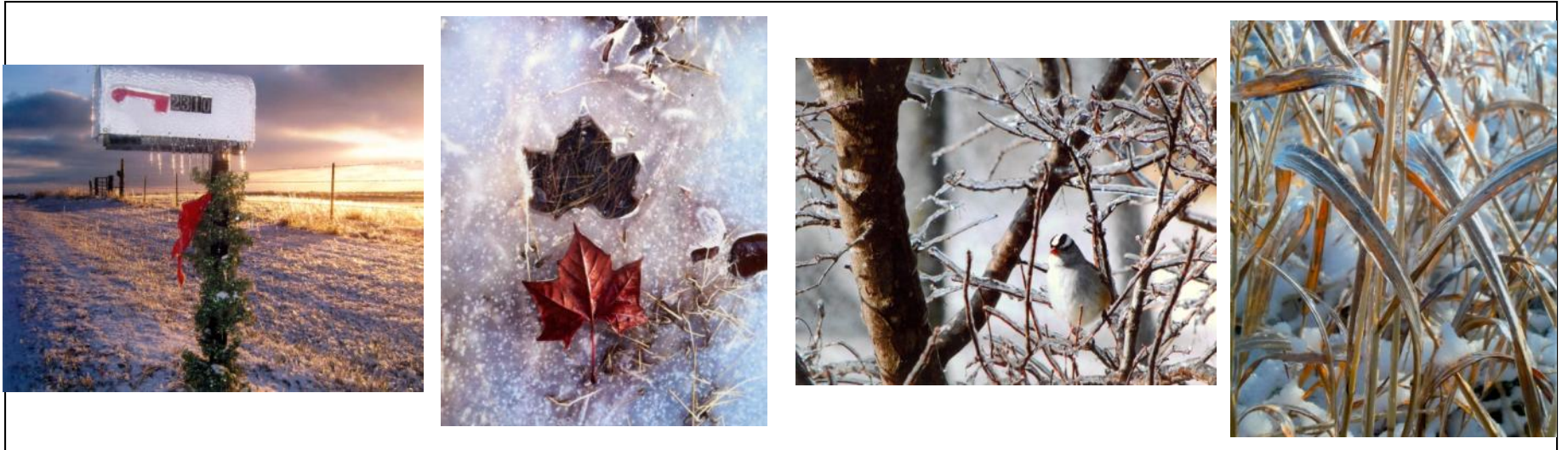
Nice color
Good rule of thirds
Lighting- bright in middle
Foreground distracts

#4

Interesting color
Fills the frame
Arches at bottom are edge merger
Lose the top into the sky

2014 State Fair Photography Judging

Class 2 Winter Wonderland



1

2

3

4

Select class

Class 1 – Architecture

Class 2 – Winter Wonderland

Class 3 – Iron Works

Class 4 – Farm Animals

Class 5 – Sunsets

Class 6 – Black & White

Intermediate Problem

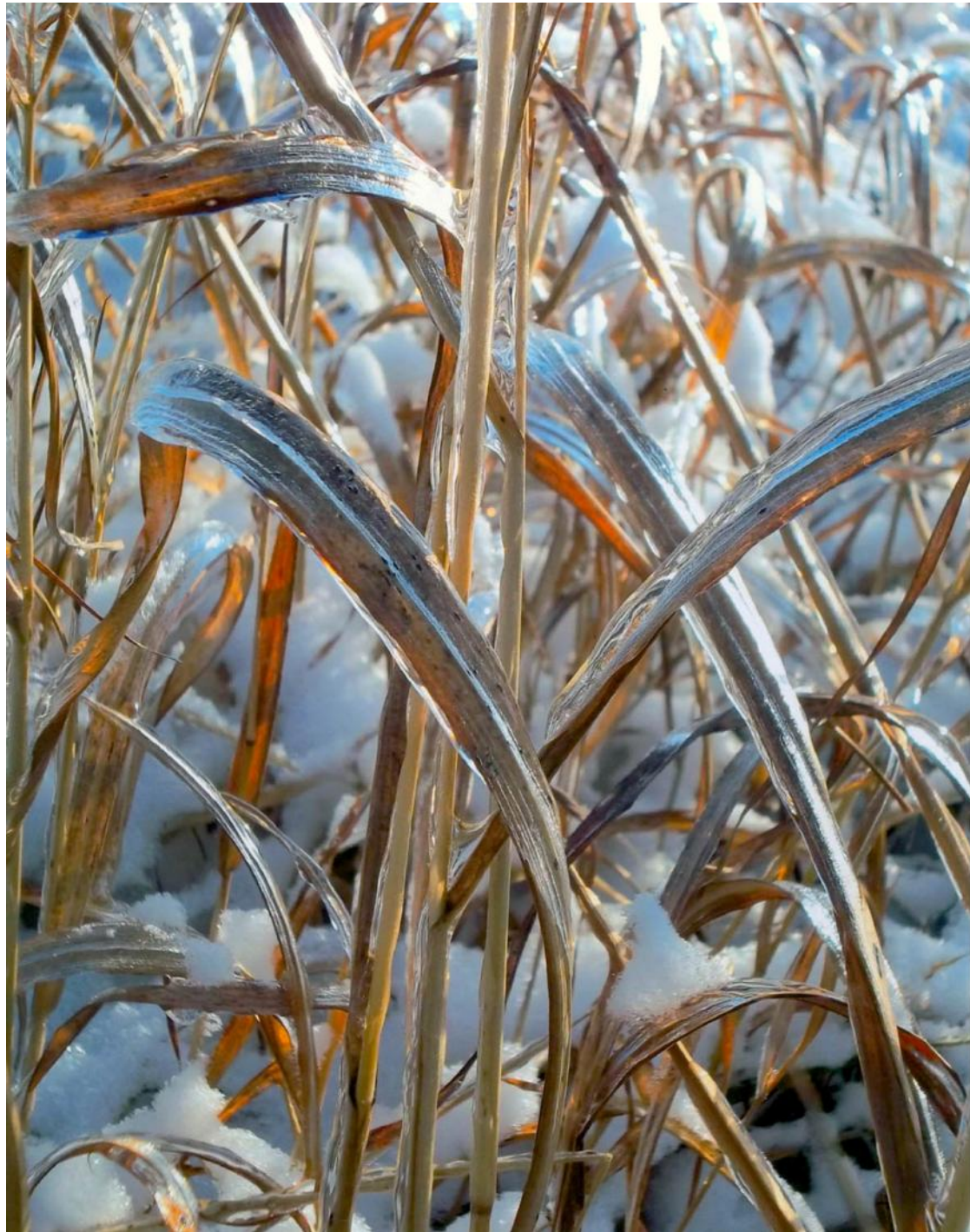
Senior Problem

Place this class of four photos in order of best to worst. Click on a photo for a full screen view, click on the large image to return to this page. Write your placing down on paper then **click the button to see official placing and reasons**









Class 2 – Winter Wonderland

Placing 4 – 2 – 1 – 3 .

v v v

Cuts 3 2 6 .



#4

Good light
Soft colors
Good depth-of-field
Interesting lines
Good focus

#2

Nice color
Good focus
Interesting contrast
Too centered
Two hot spots
Edge merger

#1

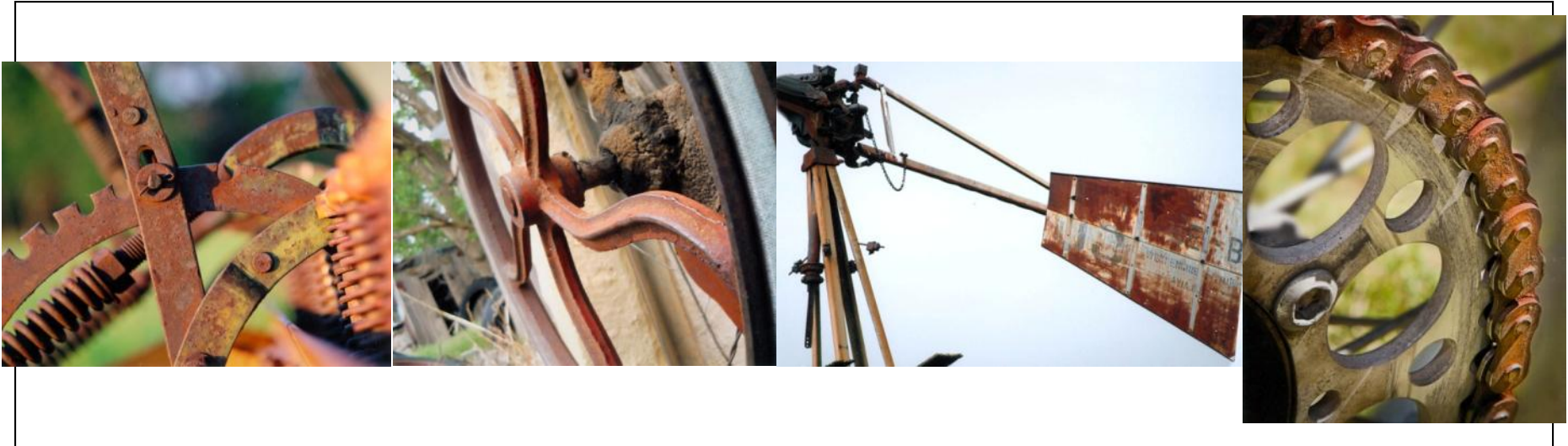
Interesting color &
Lighting
Focus is good
Edge merger at top
Centered, Left side
dark, Hot spot

#3

Rule of thirds
No depth of field
Subject is weak
Hot spots on bird and
dark on other side

2014 State Fair Photography Judging

Class 3 Iron Works



1

2

3

4

Select class

Class 1 – Architecture

Class 2 – Winter Wonderland

Class 3 – Iron Works

Class 4 – Farm Animals

Class 5 – Sunsets

Class 6 – Black & White

Intermediate Problem

Senior Problem

Place this class of four photos in order of best to worst. Click on a photo for a full screen view, click on the large image to return to this page. Write your placing down on paper then **click the button to see official placing and reasons**









Class 3 – Iron Works

Placing 4 – 1 – 3 – 2 .

v v v

Cuts 4 2 6 .



#4

Good focus
Fills the frame
Good lighting
A lot of curves
Overall good composition
Nice depth-of-field

#1

Captures the texture
Good color
Decent composition
Background distracts
Right distracts

#3

Rule-of-thirds
Good focus
Need better lighting
Edge merger on left

#2

Nice lighting
Nice texture
Edge merger
Background distracts
Lacks depth-of-field
Awkward angle

2014 State Fair Photography Judging

Class 4 Farm Animals



1



2



3



4

Select class

Class 1 – Architecture

Class 2 – Winter Wonderland

Class 3 – Iron Works

Class 4 – Farm Animals

Class 5 – Sunsets

Class 6 – Black & White

Intermediate Problem

Senior Problem

Place this class of four photos in order of best to worst. Click on a photo for a full screen view, click on the large image to return to this page. Write your placing down on paper then **click the button to see official placing and reasons**









Class 4 – Farm Animals

Placing 3 – 1 – 2 – 4 .

v v v

Cuts 4 2 6 .



#3

Good focus & lighting
 Good rule-of-thirds
 Color is strong
 Highlighted eye
 Strong subject
 Background distracting

#1

Strong subject
 Fills frame/nice color
 Monotone background
 Hot spot on forehead
 Centered
 Straw distracts

#2

Good color
 Good contrast
 Good focus
 Edge mergers on both sides

#4

Good color & focus
 Too centered
 Distracting background
 Edge merger on right
 Subject? Calf or hydrant

2014 State Fair Photography Judging

Class 5 Sunsets



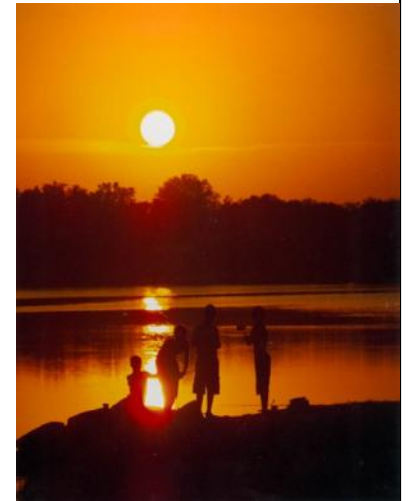
1



2



3



4

Select class

Class 1 – Architecture

Class 2 – Winter Wonderland

Class 3 – Iron Works

Class 4 – Farm Animals

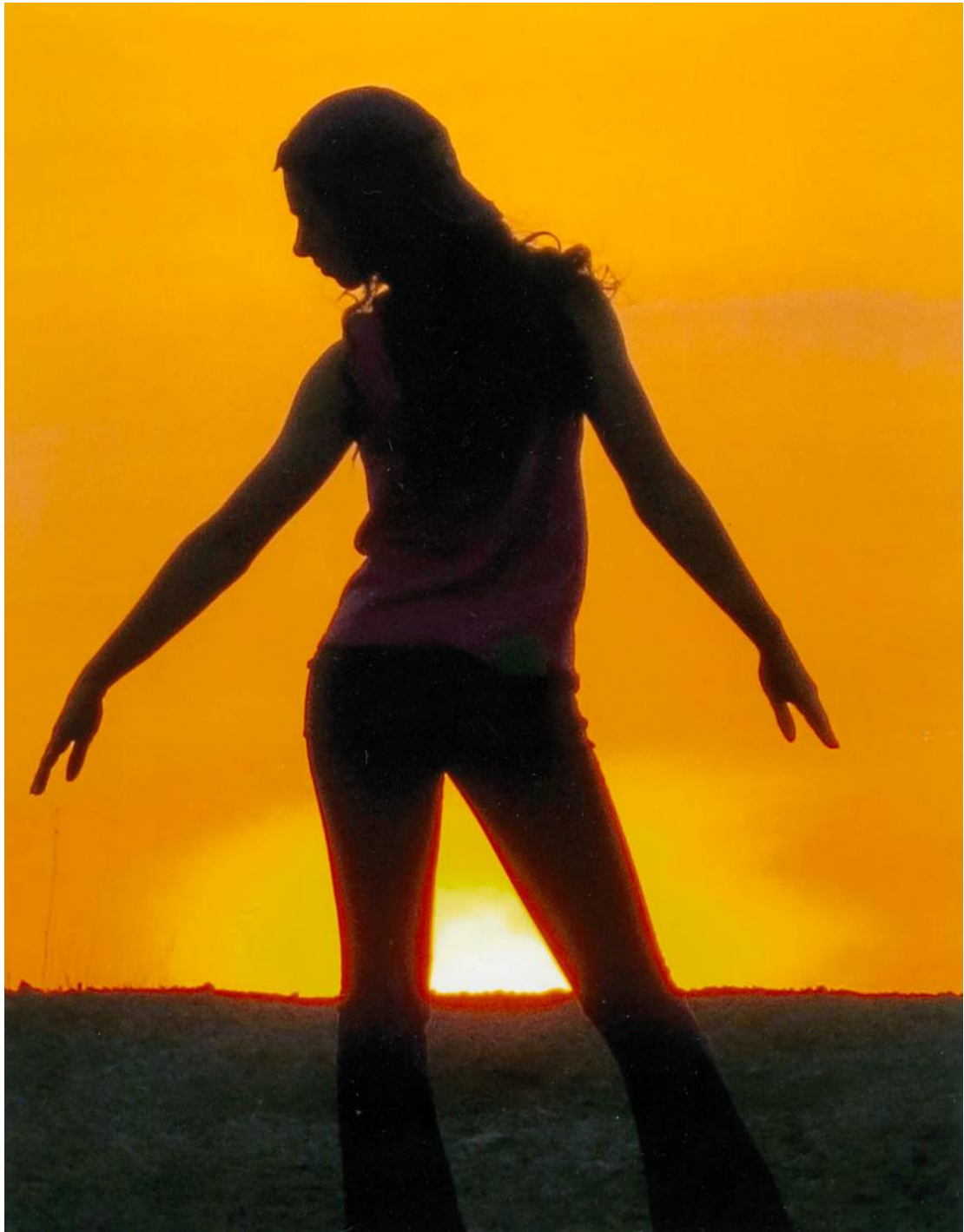
Class 5 – Sunsets

Class 6 – Black & White

Intermediate Problem

Senior Problem

Place this class of four photos in order of best to worst. Click on a photo for a full screen view, click on the large image to return to this page. Write your placing down on paper then **click the button to see official placing and reasons**







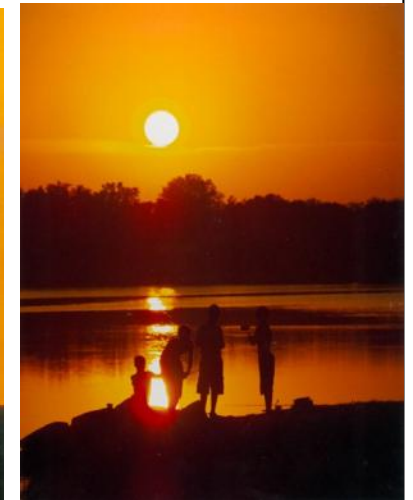
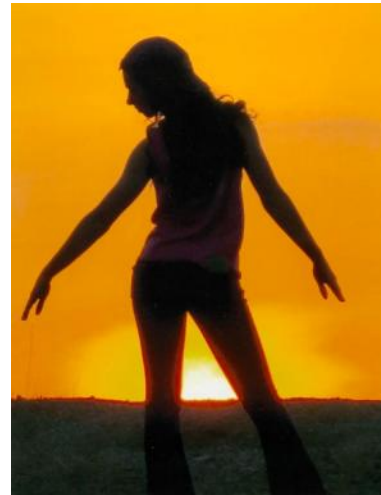


Class 5 - Sunsets

Placing 3 – 2 – 1 – 4 .

v v v

Cuts 2 6 2 .



#3

Good rule-of-thirds
Looking into picture
Good focus & color
Nice depth-of-field
Strong subject
Negative space on top

#2

Good color & Focus
Looking into picture
Good depth-of-field
Centered horizon
Other silhouette
distracts

#1

Strong subject
Lacks focus
Centered
Overexposed
Reddish edge distracts

#4

Color is key
Good focus
Horizon well placed
Lots of hot spots
Sun is not natural &
becomes main subject

2014 State Fair Photography Judging

Class 6 Black & White



1



2



3



4

Select class

Class 1 – Architecture

Class 2 – Winter Wonderland

Class 3 – Iron Works

Class 4 – Farm Animals

Class 5 – Sunsets

Class 6 – Black & White

Intermediate Problem

Senior Problem

Place this class of four photos in order of best to worst. Click on a photo for a full screen view, click on the large image to return to this page. Write your placing down on paper then **click the button to see official placing and reasons**







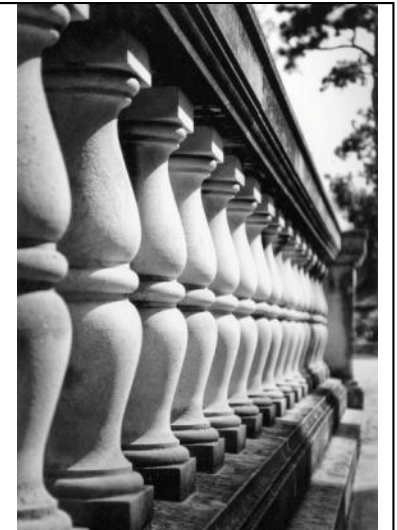


Class 6 – Black & White

Placing 1 – 4 – 2 – 3 .

v v v

Cuts 6 2 5 .



#1

Good lighting
Good focus
Good contrast
Good lines
Good shades of
black/white/gray

#4

Good focus
Interesting texture
Nice detail
Nice lines
Upper right a little dark
Competing subjects

#2

Strong subject
Eye appeal/nice lines
Lighting created a
challenge-more light
Negative space
Background distracting

#3

Nice range of tones
Strong lines
Needs more depth-of-
field
Distracting background
Horizon line centered

2014 State Fair Photography Judging Intermediate Problem



1



2



3



4

Select class

Class 1 – Architecture

Class 2 – Winter Wonderland

Class 3 – Iron Works

Class 4 – Farm Animals

Class 5 – Sunsets

Class 6 – Black & White

Intermediate Problem

Senior Problem

Choose the photo that best matches the following composition elements.

A. ___ Golden Triangle

B. ___ Leading Lines

C. ___ Fill the Frame

D. ___ Rule of thirds

Click on a photo for a full screen view, click on the large image to return to this page. Write your placing down on paper then **click the button to see official placing and reasons**









Intermediate Problem-

Placing 2 – 4 – 3 – 1 .

1 correct = 13 points

2 correct = 25 points

4 correct = 50 points



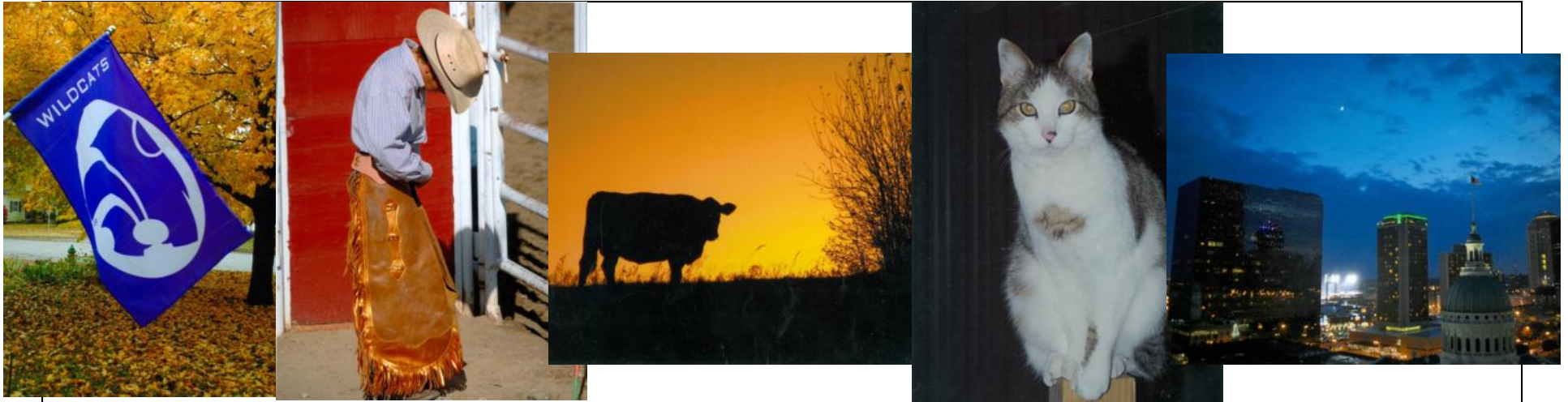
#2
Golden Triangle

#4
Leading Lines

#3
Fill the Frame

#1
Rule of Thirds

2014 State Fair Photography Judging Senior Problem



1

2

3

4

5

Match the photo that is the closest to the following. Use the photo only once.

A. ___ 12000 Kelvin

B. ___ 5500 Kelvin

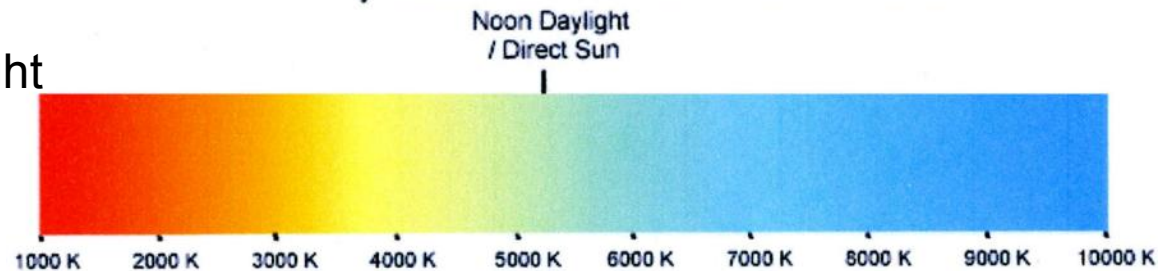
C. ___ 2000 Kelvin

D. ___ 4500 Kelvin

Click on a photo for a full screen view, click on the large image to return to this page. Write your placing down on paper then **click the button to see official placing and reasons**

Color Temperatures in the Kelvin Scale

Hint: Bright
noon daylight
is 5500K.



Select class

Class 1 – Architecture

Class 2 – Winter Wonderland

Class 3 – Iron Works

Class 4 – Farm Animals

Class 5 – Sunsets

Class 6 – Black & White

Intermediate Problem

Senior Problem











Senior Problem -

Placing 5 – 2 – 3 – 4 .

1 correct = 13 points

2 correct = 25 points

3 correct = 38 points

4 correct = 50 points



#5

12000 Kelvin
The higher numbers
are called cool colors
(bluish white)

#2

5500 Kelvin
Sunlight neat mid-day

#3

2000 Kelvin
Lower numbers are
called warm colors
(yellowish white
through red)

#4

4500 Kelvin